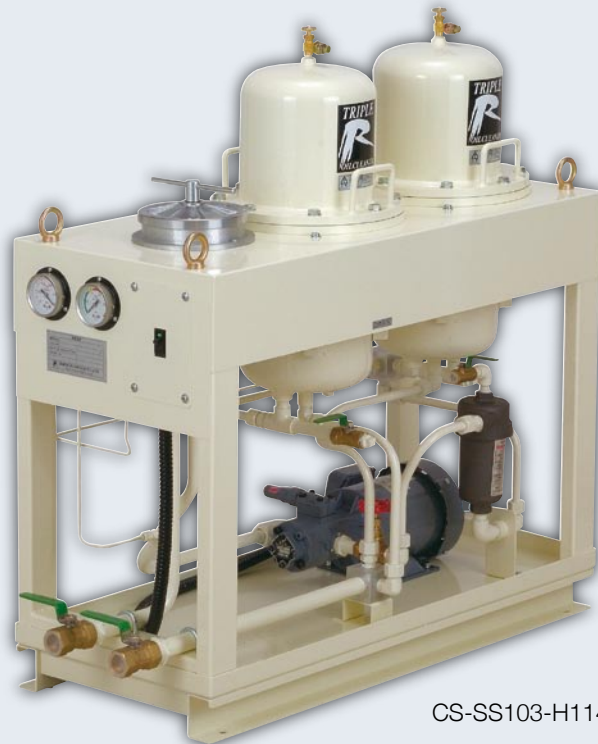


1. *Cost saving.*
2. *Improving production reliability.*
3. *Environmental responsibility.*



CS-SS103-H114-2R



Features:

- Off-line bypass oil cleaners for high flow rates and for large tank volumes. Based on the SS-series filter housings.
- Ideal for:
 - Maintenance service activities.
 - Very large oil volumes up to 50.000 litres.
 - High viscosity oil.
- Effectively removes all the particles that are usually very difficult to remove with conventional filters and performs a total cleaning of the oil by removing **solid particles**, absorbing **water** and eliminating **sludge and other oil oxidation residues**.
- All systems are fully equipped and come with a washable metal suction filter, control gauges, a control panel with on/off switch and a drain tap.
- Standard units have a flow range from 6 lit/min up to >60 lit/min, and can be suitable for very large oil volumes (>50.000 litres).
- Optional equipment: timer, automatic drain function, Quicktron air removal.

Benefits:

- Prevents trouble to the hydraulic equipments.
- Improves machine reliability and productivity.
- Longer life of all hydraulic components, pumps, valves and other equipment.
- Extends oil life by up to 40.000 hrs.
- Very important reduction of oil consumption and resulting waste oil.
- Discharges the full flow filters and extends their life.
- Important reduction of maintenance costs.

Typical applications:

- Large volume systems.
- Lube systems and high viscosity systems.
- Perfect for service flushing and for cleaning fresh oil when (re-)filling a hydraulic system.
- Hydraulic testing lines.
- Heavy industrial press.

Technical specifications

Model	Motor	Power	Flow	In/Out	Dimensions	Weight
CS-SS102-H114-2R	230Vx1 or 400Vx3 50Hz	0,38 kW	12 l/m	1" x 1"	406 x 1042 x 1007	115 kg
CS-SS103-H114-2R		0,75 kW	20 l/m	1" x 1"	406 x 1042 x 1007	115 kg
CS-SS103-H114-3R		0,75 kW	30 l/m	1" x 1"	406 x 1360 x 1007	140 kg
CS-SS104-H80-2R		0,75 kW	30 l/m	1" x 1"	406 x 1042 x 1007	115 kg
CS-SS104-H80-3R		0,75 kW	45 l/m	1" x 1"	406 x 1360 x 1007	140 kg
CS-SS305-H114-1R		2,2 kW	40 l/m	2x 1" 1/4	700 x 1100 x 1520	200 kg
CS-SS305-H114-2R		2,2 kW	70 l/m	2x 1" 1/4	700 x 1650 x 1520	280 kg
CS-SS306-H80-2R		2,2 kW	100 l/m	2x 1" 1/4	700 x 1650 x 1520	280 kg

Replacement filter elements

Type	Filter elements
SS102	M100, E100, X100, D100, WE100- Height 114mm
SS103	M100, E100, X100, D100, WE100 - Height 114mm
SS104	M100, E100, X100 - Height 80mm
SS305	M300, E300, X300, D300 - Height 114mm
SS306	M300, E300, X300 - Height 80mm

Model key

CS	-	SS103	-	H114	-	2R
frame build		housing model		element height		number of housings



CS-SS103-H114-3R



CS-SS305-H114-2R

Above mentioned models are our standard models.
Contact your local distributor for custom made solutions.

Examples of additional features:

- Additional first step pre-filters (10 to 50 micron)
- Quicktoron air bubble remover.
- Pre-heaters in case of high viscosity oil.
- Water glycol version.

Your local distributor: